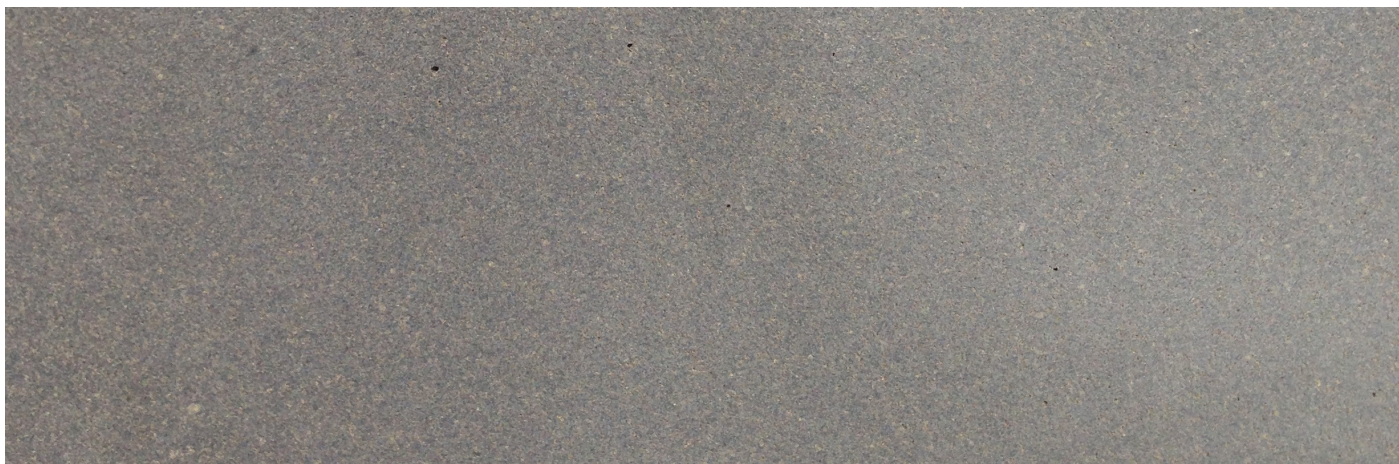


# Material Specification

## Basalt

---



## Material Specification

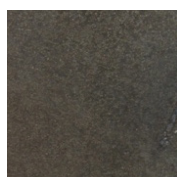
# BASALT

Basalt is classified as 'igneous' resulting from volcanic activity and magma reaching the surface as lava. The material is generally grey or black in tone and includes a variety of characteristics including veins, groups of holes referred to as "cats paws" and consistent pin holes throughout the surface.

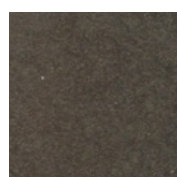
It is an extremely versatile material suitable for commercial or residential flooring but also in demand for driveways, courtyards, garden paving, pool surrounds and pathways. A variety of surface finishes accommodates the adaptability of the product to all of the above applications.

**Material Type:**  
**Available Surface Finishes:**

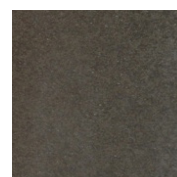
Basalt - Finish availability is dependent on individual products.



Honed



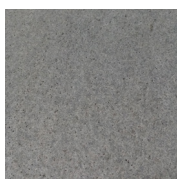
Polished



Brushed



Sawn



Flamed



Sandblasted



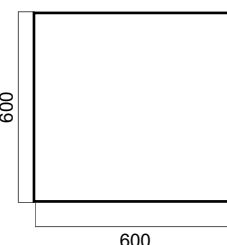
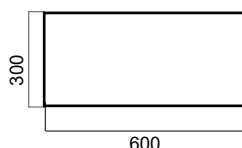
Sandblasted  
& brushed



Bush-  
hammered

**Standard Tile Sizes:**

600x300mm, 800x400mm, 600x600mm, with custom tiles sizes available upon request.



## General Guidelines for Installation & Maintenance:

**Adhesive:** **CTA Eco Systems Opticure** or equally approved.  
Note; Minimise risk of Efflorescence by use of **Efflock** as an additive to water when used at any stage of the install process.

**Sealer:** **Sealers Plus Gold +** or equally approved.  
Dip Sealing (six sided) with **Sealers Plus Ultra Block** is applicable to areas exposed to water such as shower walls and floors, pool and pond coping. Note: Sealing on completion with **Gold +** is still a requirement. Suggested to be resealed every 1-2 years.

**Colour Enhance:** For a darker shade consider substituting Gold + with either **Lithofin Intensifier** or **Sealers Plus Enhance 'N' Seal**. Lithofin Intensifier results in a more subtle colour change, Enhance n Seal gives a considerably darker result. If in doubt we suggest to experiment on a sample prior to proceeding.

**Grout Specification:** **Ardex Midnight FG8**. Note; that the entire surface of the tile is also to be grouted.

**Suggested Contractors:** Cleaning, Sealing and Buffing on completion by the below contractors:

**Nano Worx**

P: 0403 321 982

E: sales@nanoworx.com.au

W: www.nanoworx.com.au

**Sealwerx**

P: 0400 362 360

E: sealwerxwa@bigpond.com

W: www.sealwerx.com.au

For technical guidelines for external feature walls, paving, driveways or any other application, please contact our office for further advice.

